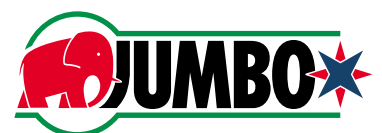




DP2 Heavy Lift Crane Vessel
JUMBO JAVELIN

A multi-functional dynamic positioned Heavy Lift Crane Vessel (HLCV) well suited to the offshore requirements of the Energy Industry worldwide.

Length	144.1 m
Breadth	26.7 m
Depth	14.1 m
Accommodation	80 POB
Transit Speed	17 Knots
Mast Cranes	2 x 900 Te
Depth rating	3,000 m



CAPABILITIES



Quayside-to-Seabed

Offering versatility, high transit speed, stability and the ability to work in deep-water and harsh offshore environments, the Jumbo Javelin provides cost effective transport and installation solutions. An exceptionally large, flush working deck and a multi-level cargo hold enables the Jumbo Javelin to add modular components to suit specific project requirements and to integrate all offshore activities from “Quayside-to-Seabed”. This unique method saves multiple resources, critical time, complex logistics and offshore interfaces.

Fast Economical Transit and High Workability

The Jumbo Javelin is a large vessel with motion characteristics that allows safe working in the harshest offshore environments. The high freeboard and dock walls protect crew and cargo in harsh weather conditions. A key attribute of Jumbo Javelin is its fast and economical transit speed, saving time and cost to operate in remote logistically challenging locations. On location, its method to lift all components from its own deck ensures maximum safety, installation control and workability.

Dual- Crane Deepwater Heavy Lifting

Jumbo Javelin is equipped with two mast cranes with a Safe Working Load (SWL) of 900Te each. The dual cranes provide tandem heavy lift capacity, dual crane upending capability as well as deep-water lowering capability.

The integrated deep-water deployment systems allow direct lowering and accurate positioning of subsea structures in water depths up to 3,000 m.

Large Main Deck and adjustable Cargo Hold

The main deck has an exceptionally large working area of 3,100 m² and offers a loading capacity of 12 Te/m². The adjustable tween deck has an area of 1,700 m² and offers a loading capacity of 7 Te/m² and the lower hold area of 1,400 m² has a loading capacity of 12 Te/m².

Dynamic Positioning (DP) System

The Jumbo Javelin is fitted with a fully redundant Kongsberg SDP 21 Dynamic Positioning System with six independent reference systems, enabling her to maintain its position during all offshore installation activities.

ROV and LARS

During subsea operations the Jumbo Javelin is fitted with two (2) Work Class ROV systems (150HP), launched over the side (starboard and/or portside) with a Launch And Recovery System (LARS) rated to 3,000m depth.

Accommodation

The modern living quarters are equipped to accommodate up to 80 persons. All quarters have heating and air-conditioning facilities. The life-saving and fire-fighting equipment are according to the latest class and SOLAS requirements.

SPECIFICATIONS

General

Call sign	PHEG
IMO no.	9243837
Built	2004
Flag	The Netherlands
Port of Registry	Willemstad
Classification	LLOYD'S REGISTER 100 A1, LI, CG, +LMC, UMS, DP AA

Principal Dimensions/Tonnage

Length o.a.	144.1 m
Length b.p.p	133.8 m
Breadth moulded	26.7 m
Depth to Main Deck	14.1 m
Draft (bottom keel)	6.0 m / 8.1 m
Displacement (at 7.5m)	20,120 Te
Deadweight (at 7.5m)	10,942 Te
GRT	15,022 Te
NRT	4,506 Te

Main Deck/Cargo Hold Area Strength

Main Deck/Cargo Hold	Area	Strength
Main Deck	3,100 m ²	9-12 Te/m ²
Tween Deck	1,700 m ²	7 Te/m ²
Lower Hold/Tank top	1,400 m ²	12 Te/m ²

Power Plant

Main Engines	2x MAN 9L 32/40 4,320 kW
Auxiliary Engines	1 x Caterpillar 3516B 1,824 kW/ea 1 x Caterpillar 3508B 740 kW/ea
Shaft Generators	2 x AEM SE 630 M4 3,000 kW/ea
Emergency Generator	1 x 280 kW

Propulsion Plant

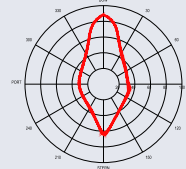
Stern Main Thrusters	2 x Wartsila CPP
Bow Thrusters	1 x Wartsila 1,450 kW 1 x Rolls Royce 1500 kW
Retractable Azimuth Thrusters	1 x Wartsila 1,700 kW

Service Speed

Transit average	17 Knots
Economical	14 Knots

Dynamic Positioning System

DP System	Kongsberg SDP 21
Reference Systems	2 x Seatex 116cm DGPS 1 x Veripos Verify DGPS 1 x HiPAP 501 1 x LTW (tautwire system) RADIUS/Fanbeam



Cranage

Cranes/Type	Huisman Mast Cranes 2 x 900 Te Revolving
Heavy Lift Capacity	1,000 Te (Offshore) 1,800 Te (Calm Water/Harbor)
Subsea Lift Capacity	1,000 Te at 1,000 m water depth 660 Te at 1,500 m water depth 280 Te at 2,000 m water depth 200 Te at 3,000 m water depth
Heave Compensation	Passive Heave Compensators project specific/tailor made
Ancillary Lifting	Auxiliary Hoists: 2 x 37,5 Te Travel Trolley Sling Handling Hoists: 2 x 10 Te Tugger Winches: 2 x 25 Te / crane (constant tension) 1 x 700 Te Fly-Jib

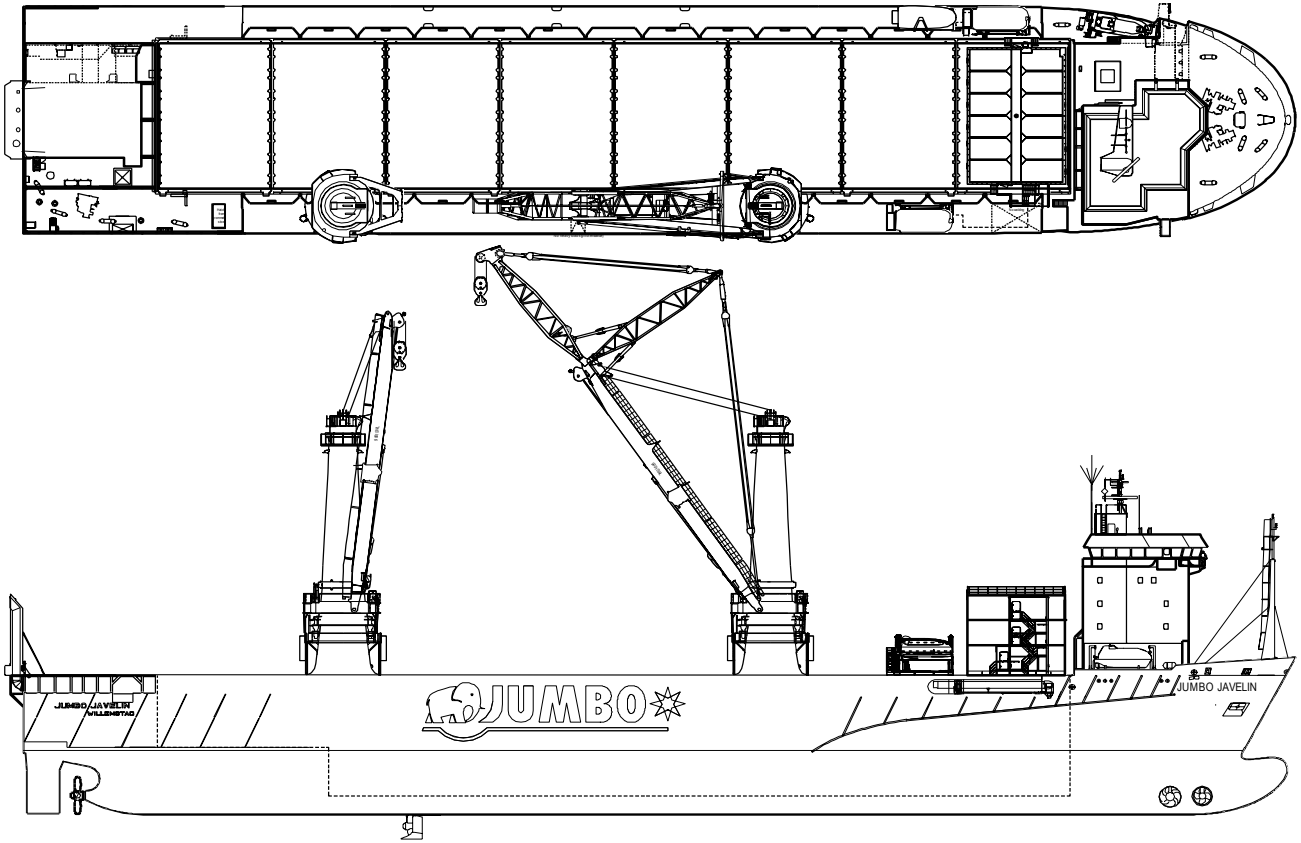
Capacities

Fuel Oil	1,270 Te I.F.O/209 Te M.G.O
Fresh water	141 Te

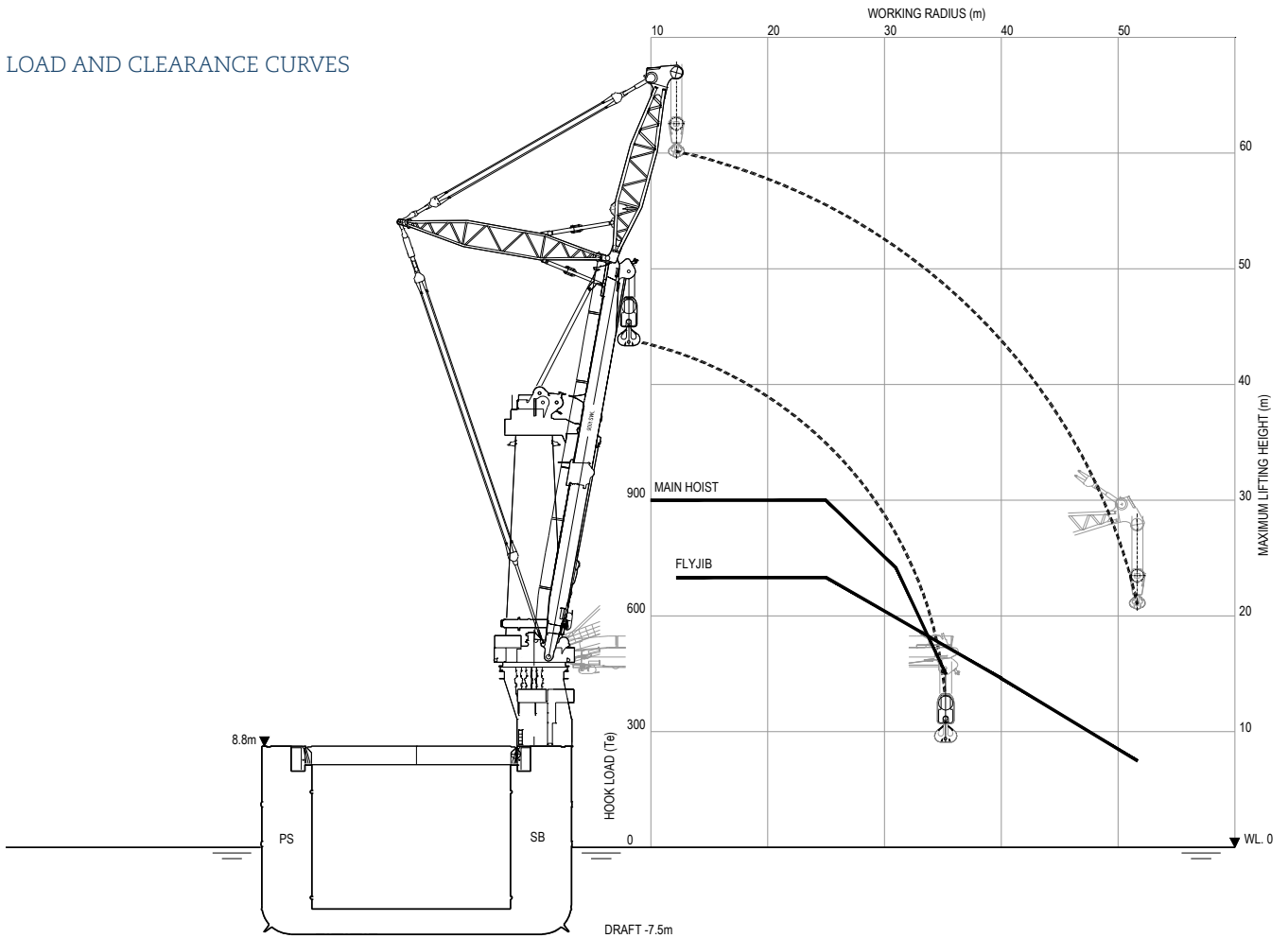
Accommodation

Accommodation	up to 80 persons (incl. hospital 2 pers) 10 x single cabins 34 x double cabins
---------------	--

GENERAL ARRANGEMENT



LOAD AND CLEARANCE CURVES



HAVENSTRAAT 23
 3115 HC SCHIEDAM
 THE NETHERLANDS
 PHONE +31 10 79 00 300
 INFO@JUMBOMARITIME.NL

