



DP2 Heavy Lift Crane Vessel  
**FAIRPLAYER**

A multi-functional dynamic positioned Heavy Lift Crane Vessel (HLCV) suited to the offshore requirements of the Energy Industry worldwide.

Length	144.1 m
Breadth	26.7 m
Depth	14.1 m
Accommodation	75 POB
Helideck	Sikorsky S-92
Transit Speed	17 Knots
Mast Cranes	2 x 900 t
Depth rating	3,000 m





## CAPABILITIES



### Quayside-to-Seabed

Offering versatility, high transit speed, stability and the ability to work in deep-water and harsh offshore environments, the Fairplayer provides cost effective transport and installation solutions. An exceptionally large, flush working deck and a multi-level cargo hold enables the Fairplayer to add modular components to suit specific project requirements and to integrate all offshore activities from “Quayside-to-Seabed”. This unique method saves multiple resources, critical time, complex logistics and offshore interfaces.

### Fast Economical Transit and High Workability

The Fairplayer is a large vessel with motion characteristics that allows safe working in the harshest offshore environments. The high freeboard and dock walls protect crew and cargo in harsh weather conditions. A key attribute of Fairplayer is its fast and economical transit speed, saving time and cost to operate in remote logistically challenging locations. On location, its method to lift all components from its own deck ensures maximum safety, installation control and workability.

### Dual- Crane Deepwater Heavy Lifting

Fairplayer is equipped with two mast cranes with a Safe Working Load (SWL) of 900 t each. The dual cranes provide tandem heavy lift capacity, dual crane upending capability as well as deep-water lowering capability.

The integrated deep-water deployment systems allow direct lowering and accurate positioning of subsea structures in water depths up to 3,000 m.

### Large Main Deck and adjustable Cargo Hold

The main deck has an exceptionally large working area of 3,100 m<sup>2</sup> and offers a loading capacity of 12 t/m<sup>2</sup>. The adjustable tween deck has an area of 1,700 m<sup>2</sup> and offers a loading capacity of 7 t/m<sup>2</sup> and the lower hold area of 1,400 m<sup>2</sup> has a loading capacity of 12 t/m<sup>2</sup>.

### Dynamic Positioning (DP) System

The Fairplayer is fitted with a fully redundant with six independent reference systems, enabling her to maintain its position during all offshore installation activities.

### ROV and LARS

During subsea operations the Fairplayer is fitted with two (2) Work Class ROV systems (150HP), launched over the side (starboard and/or portside) with a Launch And Recovery System (LARS) rated to 3,000 m depth.

### Accommodation/Helideck

The modern living quarters are equipped to accommodate up to 75 persons. All quarters have heating and air-conditioning facilities. The life-saving and fire-fighting equipment are according to the latest class and SOLAS requirements. The helicopter deck is certified for 12,8 Te take-off weight (Sikorsky S-92 Class - CAP 437)

# SPECIFICATIONS

General	
Call sign	PHPU
IMO no.	9371579
Built	2008
Flag	The Netherlands
Port of Registry	Rotterdam
Classification	Lloyd's Register+ 100A1, Strengthened for Heavy Cargos
	LMC, UMS, CG, LI, DP (AA), IWS

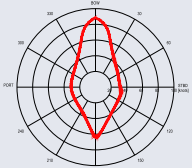
Principal Dimensions/Tonnage	
Length o.a.	144.1 m
Length b.p.p	133.8 m
Breadth moulded	26.7 m
Depth to Main Deck	14.1 m
Draft (bottom keel)	6.0 m / 8.1 m
Displacement (at 7.5m)	20,120 t
Deadweight (at 7.5m)	10,700 t
GRT	15,027 t
NRT	5,244 t

Main Deck/Cargo Hold	Area	Strength
Main Deck	3,100 m <sup>2</sup>	9-12 t/m <sup>2</sup>
Tween Deck	1,700 m <sup>2</sup>	7 t/m <sup>2</sup>
Lower Hold/Tank top	1,400 m <sup>2</sup>	12 t/m <sup>2</sup>

Power Plant	
Main Engines	2 x MAK 9M 32C 4,500 kW
Auxiliary Engines	2 x Caterpillar 3516B 1,824 kW/ea
Shaft Generators	2 x AEM SE 630 M4 3,000 kW/ea
Emergency Generator	1 x 465 kW

Propulsion Plant	
Stern Main Thrusters	2 x Wartsila CPP
Bow Tunnel Thrusters	2 x Wartsila 1,500 kW
Retractable Azimuth Thrusters	1 x Wartsila 1,700 kW

Service Speed	
Transit average	17 Knots
Economical	14 Knots

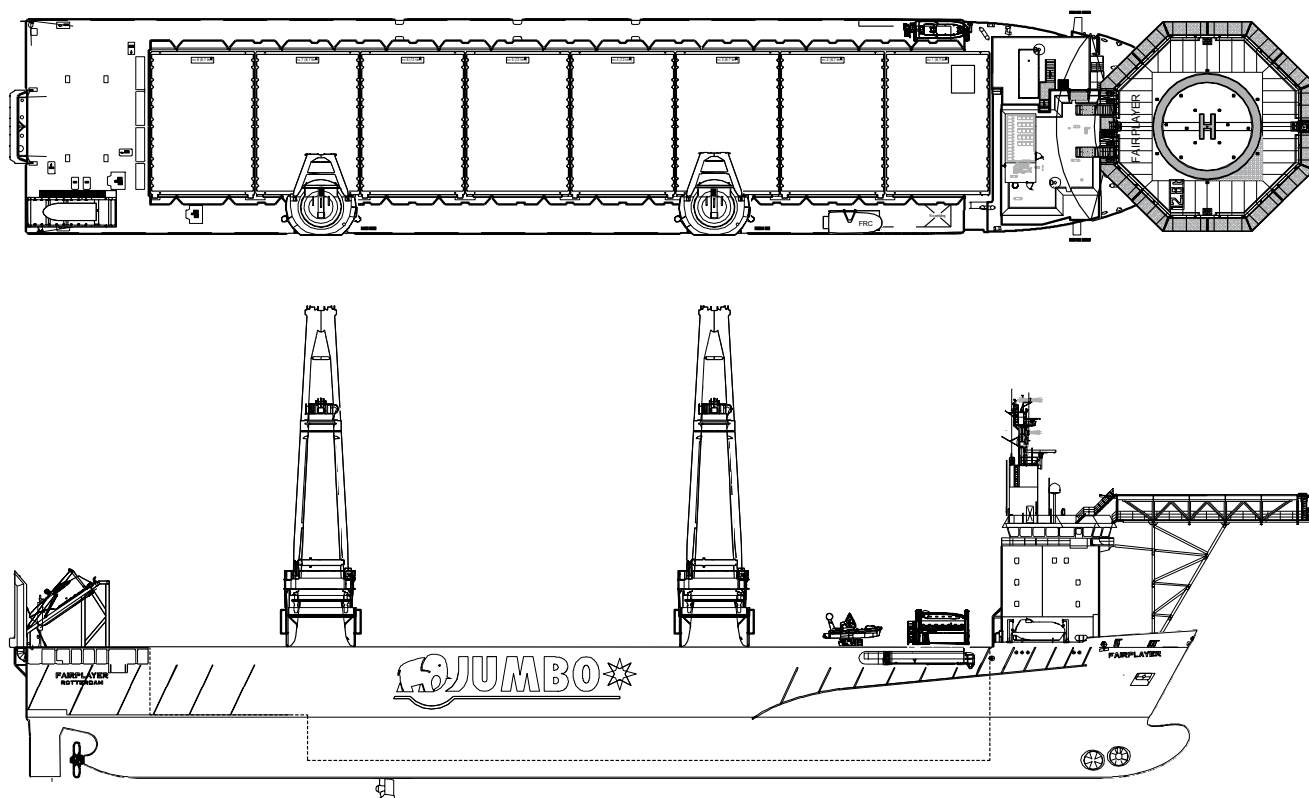
Dynamic Positioning System	
DP System	Kongsberg K-pos2 system
Reference Systems	2 x Seatex 116 DPS
	1 x Veripos Verify DGPS
	1 x HiPAP 501
	1 x LTW (tautwire system)
	RADius/Fanbeam

Cranage	
Cranes/Type	Huisman Mast Cranes
	2 x 900 t Revolving
Heavy Lift Capacity	1,000 t (Offshore)
	1,800 t (Calm Water/Harbor)
Subsea Lift Capacity	1,000 t at 1,000 m water depth
	660 t at 1,500 m water depth
	280 t at 2,000 m water depth
	200 t at 3,000 m water depth
Heave Compensation	Passive Heave Compensators
	project specific/tailor made
Ancillary Lifting	Auxiliary Hoists: 2 x 37,5 t
	Travel Trolley
	Sling Handling Hoists: 2 x 10 t
	Tugger Winches: 2 x 25 t / crane
	(constant tension)
	1 x 700 t Fly-Jib

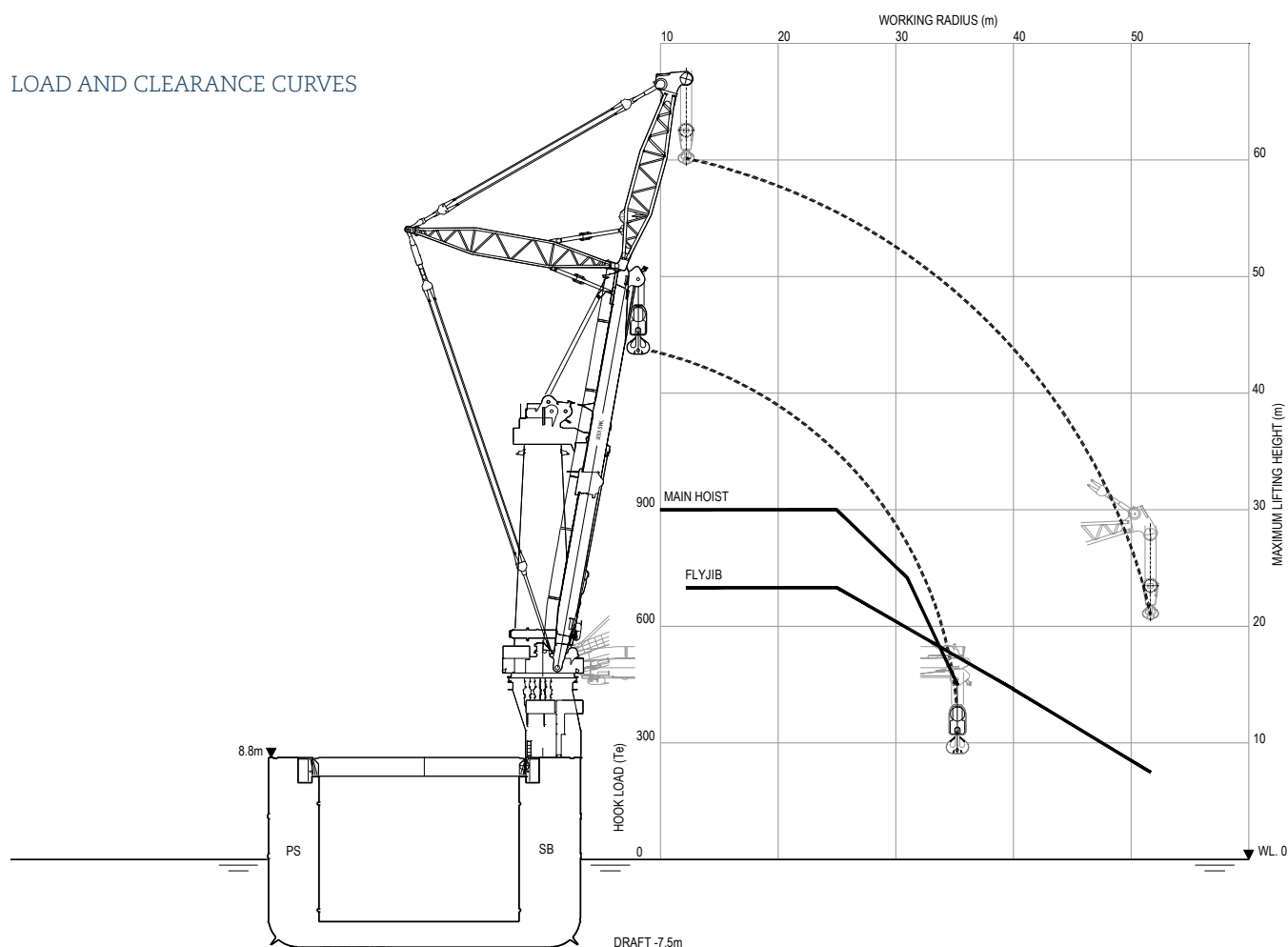
Capacities	
Fuel Oil	1,340 t I.F.O/290 Te M.G.O
Fresh water	200 t

Accommodation/Helideck	
Accommodation	up to 75 persons
	13 x single cabins,
	31 x double cabins
Helideck	12.8 t (Sikorsky S-92-CAP437)

## GENERAL ARRANGEMENT



## LOAD AND CLEARANCE CURVES



HAVENSTRAAT 23  
3115 HC SCHIEDAM  
THE NETHERLANDS  
PHONE +31 10 79 00 300  
INFO@JUMBOMARITIME.NL

